



# Recycle for Liverpool

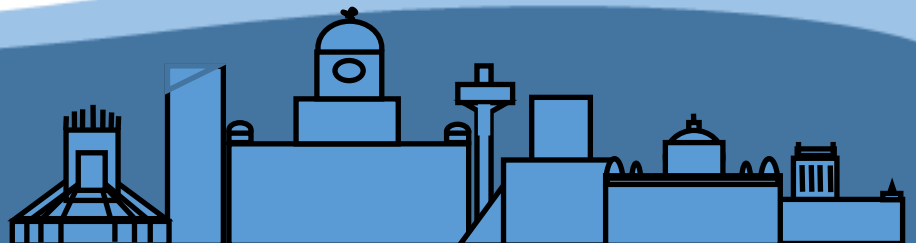
*An online resource  
for children and families at home.*

*Suitable for Key Stages 1,2*

Produced by Liverpool City Council's  
Recycling & Waste Minimisation Team



Liverpool  
City Council



***Make Liverpool - Cleaner & Greener Together***

# Recycle for Liverpool



## Introduction

This pack will help children (and adults) learn about recycling.

More than half of all waste collected from homes in Liverpool should be recycling. This means we need to increase recycling at home. Everyone needs to **reduce** the amount of waste we have in our homes, **re-use** what we can and **recycle** the waste we throw away. This also means putting less waste in our general waste bins, which is more expensive to collect.

**What is Recycling?** Recycling is the process of changing waste into new useable items and objects. Recyclable materials can continuously be reused and are placed in your blue recycling bin.

## Why is it important to Recycle?

The waste we create is having a negative impact on the planet and our environment. Harmful chemicals and greenhouse gases are released from rubbish in landfill sites around the world. Recycling helps to reduce the pollution caused by waste. By making small changes in our daily lives we can reduce the amount of waste that ends up in black bin bags, (and subsequently onto landfill or incineration depending on where you live in the UK).

## What can I recycle in my recycle bin? (see pictures on page 20)

Glass bottles and jars

Aluminium Cans

Tin cans

Paper

Cardboard

Plastic bottles

Grass cuttings are collected separately in a green bin in certain streets.

**What is general waste?** This is all the other waste that cannot be recycled—these items go in your purple or general waste bin.



# What colour bin do I use?

## Blue Bin and Blue Bag\* - Recycling

Items to put in your Blue Bin/Bag:



\*some properties have bags or communal bins depending on property type

Items NOT to put in your Blue Bin/Bag:

Yoghurt pots or plastic food trays



Juice cartons (Tetrapaks)



Food or liquids



REMEMBER! Put your recycling straight into your bin loose

## Green Bin\* - Garden Waste

Items to put in your Green Bin:



\*where applicable

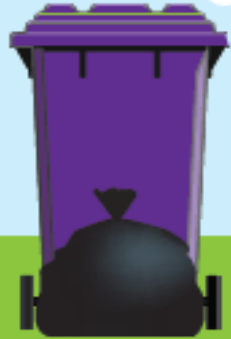
### Compost It

To get exclusive offers on home composting visit [liverpool.gov.uk/bins-and-recycling/](http://liverpool.gov.uk/bins-and-recycling/)

## Purple Bin\* - General Waste

Items to put in your Purple Bin:

Anything that cannot be re-used, recycled or composted.



\*some properties have bags or communal bins depending on property type

## Can you recognise the type of bin you put your waste in?

- ✓ Steel/tin cans
- ✓ All envelopes including plastic windows
- ✓ All plastic bottles - leave the lids on
- ✓ Cardboard cereal and food boxes
- ✓ Paper, magazines and newspapers
- ✓ Glass bottles and jars - leave the lids on

Items NOT to put in your Blue Bin:

- ✗ Yoghurt pots or plastic food trays
- ✗ Juice cartons (Tetrapaks)
- ✗ Food or drink



If your bins are contaminated with plastic bags the bins WILL NOT BE EMPTIED.

# When do we empty your bins?

You can check the day and date we empty your bin by contacting Liverpool City Council on: **0151 233 3001** or go online and follow these simple steps:

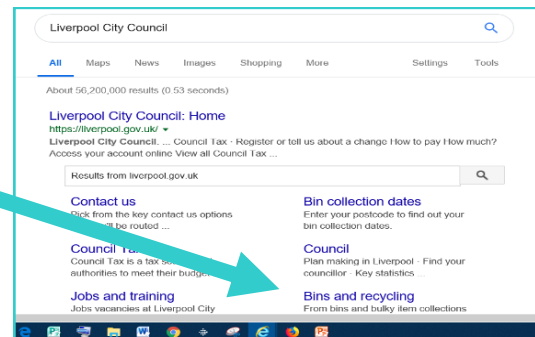
Translation service is available when speaking to the Customer Contact Centre



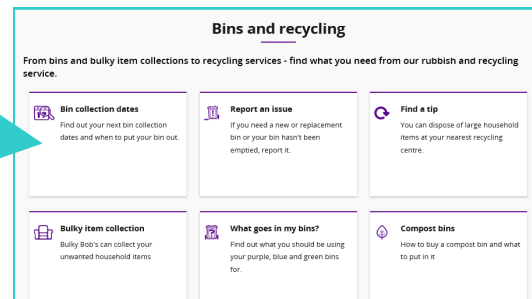
1 Type in **Liverpool City Council** into your computer search bar



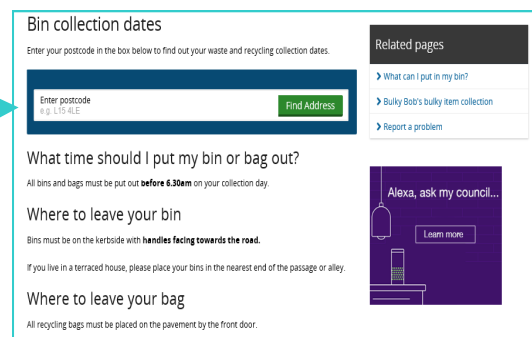
2. Click on **Bins and Recycling**



3 Click on **bin collection dates**



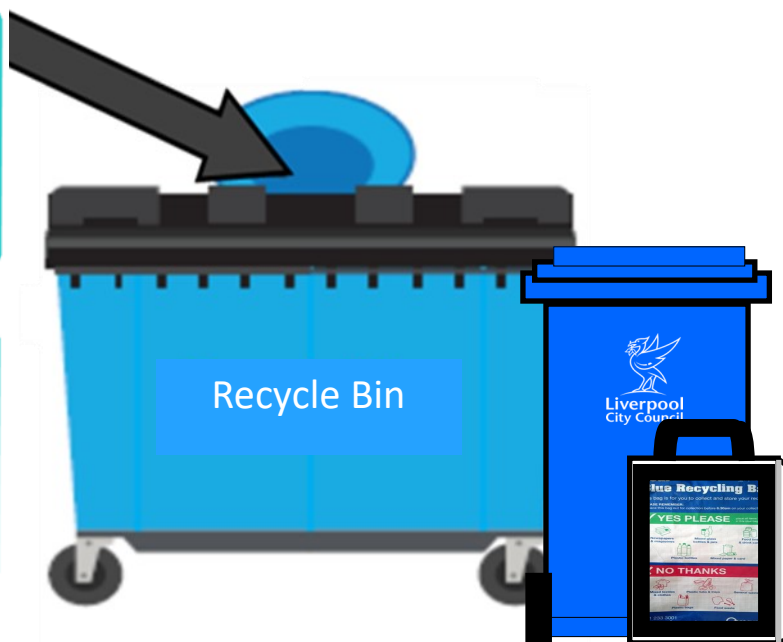
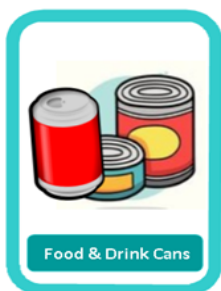
4. put in your postcode and click **find address**



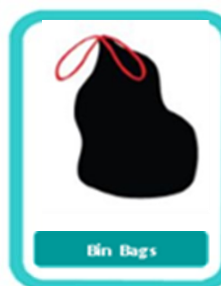
# What should I put in my blue recycling bin?



**Yes Please! (put in loose in your recycling bin)**

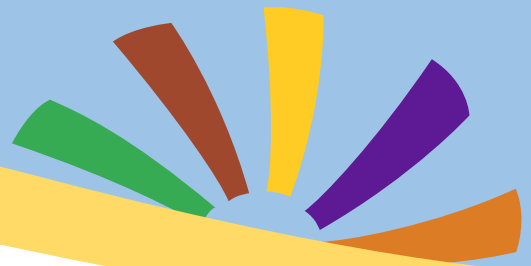


**No Thanks! (put these items in black bags in your purple bin)**





# What can I recycle?



You can recycle all these items from around the home!



# Please remember the Golden Rules

No plastic bags in the recycling bin.

(plastic gets stuck in the machine during the recycling process)



Loosely place your recyclable items into your bin



Plastic Bottles are the only plastic you should place in your recycle bin



Don't crush or squash plastic bottles or cans

(the recycling plant only recognises and sorts items in its full form)



Please remember to return your bin back to your property after collection  
Keep your street tidy for everyone.



# Tips to recycle and reduce your waste



## Remember the three R's—Reduce, Re-use and Recycle

Create a space in your kitchen for a container to put your recyclable waste in and place it next to your rubbish bin, this will act as a reminder to everyone in your household to recycle.

- Flatten your cardboard boxes when putting them in the recycling, this will help you get more recycling in your bin.
- Empty your indoor recycling container regularly into your blue bin to avoid it overflowing.
- Register with the Mail Preference Service to stop unwanted mail [www.mpsonline.org.uk](http://www.mpsonline.org.uk)
- Plan your meals to waste less food, to save money and reduce your food waste. [www.Love Food Hate Waste.com](http://www.LoveFoodHateWaste.com)
- Try composting your waste. [www.recyclenow.com](http://www.recyclenow.com) or [www.liverpool.gov.uk](http://www.liverpool.gov.uk)
- Use your Household Waste Recycling Centres. Please go to [www.liverpool.gov.uk](http://www.liverpool.gov.uk) or [www.merseysidewda.gov.uk](http://www.merseysidewda.gov.uk) for details.
- Don't put unwanted clothes and textiles in your purple bin, take them to your Household Waste Recycling Centre, donation bank or charity shop. During Covid-19 donation banks and charity banks may not be open, Check first for details.



Cheadle Ave Household Waste Recycling Centre, Old Swan

**Recycling makes a difference to our planet for future generations!**





## Did you know....



- The energy saved by you recycling one aluminium drink can is enough to run a television for three hours.
- There are 2 Household Waste Recycling Centres in Liverpool ? They are Jericho Lane in Aigburth and Cheadle Avenue in Old Swan.
- Items made from plastic can take up to 1,000 years to break down into the earth.
- Recycling aluminium drinks cans saves 95% of the energy it takes to extract new aluminium.
- In 2016 Barcelona Football Club had their football shirts made out of recycled plastic bottles.
- Each year in the UK ,households throw away over 29.1 million tonnes of waste, that's the same weight as 4.85 million male African Elephants!  
(source: [recycle-more.co.uk](http://recycle-more.co.uk))
- In the UK we throw away 13 billion steel cans every year. If they were stacked on top of each other it would reach to the moon! (source: [www.scrib.org.uk](http://www.scrib.org.uk))
- The energy saved from recycling one glass bottle is enough a power a light bulb for four hours!
- Disposable nappies are thought to take around 500 years to decompose
- Your general waste that you put in your purple bin goes through a process called 'Energy from Waste' which heats up to 444,000 tonnes of waste each year. This produces energy to run 63,000 homes

**See how many more facts about recycling you can find online !**



# Activity: Build a Robot



## Instructions:

Create your own robot from materials that can be recycled at home or out on your daily exercise. Your model should be made only of clean recyclable material—remind yourself of these on p2 . Important! Make sure all the items are clean and have no sharp edges and get someone responsible to help if using scissors.

## You will also need:

- Sellotape
- Glue
- String
- Paints

When your Recycle Robot model is complete take a photograph.

Send your picture to us at [recyclingteam@liverpool.gov.uk](mailto:recyclingteam@liverpool.gov.uk)

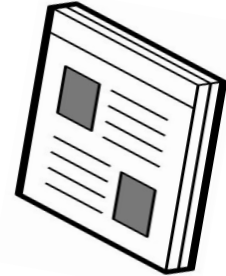
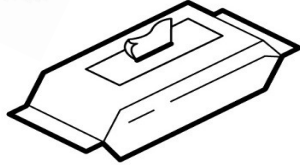
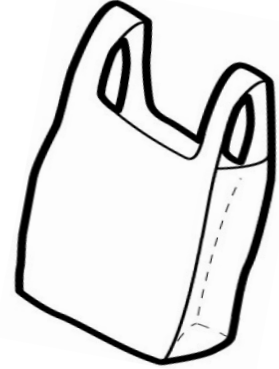
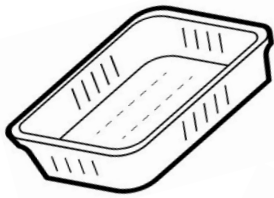
We will display them on social media and be used during Recycle Week in September.

Please name your photos with your robot's name and your surname (optional). This information is only used to identify the image for a later press/social media release)



*Images (subject to its suitability for reproduction print off) may be used for future recycling projects and Liverpool City Council recycling promotions .*

# Activity: Which bin should I put it in?

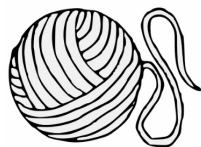


Draw a line from the item of waste to the correct bin

# Feed the Birds 1/2

## Make a birdfeeder

**You will need:** a pine cone, string, lard/butter and bird seed



1



2



3



4



### How To Make your Pine Cone Bird Feeder:

1. Tie the string around the top of the pine cone.
2. Rub the pine cone in the lard or butter.
3. Dip your pine cone into the seed.

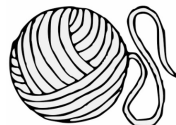
4. Hang the birdfeeder high up outside away from predators and in the shade.
5. Enjoy watching the birds feeding.

**Please remember:** if looking for pine cones whilst out on your local 'once a day' outdoor exercise only do it with members of your household, not in groups and keep 2 metres apart from others at all times. For more information please visit [www.gov.uk/coronavirus](http://www.gov.uk/coronavirus)

# Feed the Birds 2/2

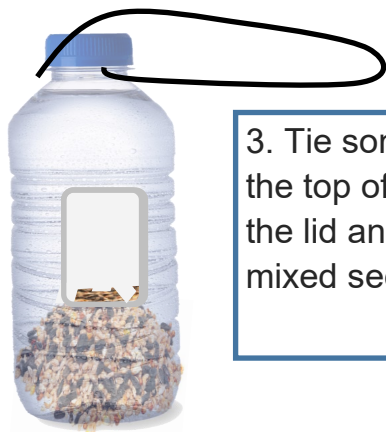


**You will need:** an empty bottle, safety scissors, string and bird seed



1. Get an adult to cut a hole in your plastic bottle, big enough for a small bird to fit in.

2. Make a very small hole underneath for a perch. You will also need a very small drainage hole at the base of your bottle.



3. Tie some string around the top of the bottle beneath the lid and fill the bottle with mixed seed.

4. Place a pencil through the lower hole to act as a perch for the birds

5. Place your bird feeder high up away from predators like cats and enjoy watching the birds.

For more information on feeding the birds or to download a bird identification sheet please visit [www.rspb.org.uk](http://www.rspb.org.uk)



# Activity: Word Search



|   |   |   |   |   |   |   |   |   |   |   |   |   |   |   |
|---|---|---|---|---|---|---|---|---|---|---|---|---|---|---|
| H | E | S | U | E | R | E | D | U | C | E | S | N | A | C |
| E | A | N | B | A | L | U | M | I | N | U | M | E | R | A |
| L | R | C | V | A | D | E | C | O | M | P | O | S | E | R |
| P | T | L | L | I | T | T | E | R | F | U | E | L | P | D |
| L | H | E | E | A | R | T | H | W | O | R | M | S | A | B |
| A | D | A | L | B | G | O | S | S | A | L | G | O | P | O |
| M | A | N | C | O | L | A | N | D | F | I | L | L | O | A |
| R | Y | W | Y | T | I | C | O | M | P | O | S | T | D | R |
| E | P | A | C | T | O | E | T | R | E | E | S | R | O | D |
| H | S | T | E | L | S | C | L | E | A | N | A | I | R | I |
| T | O | E | R | E | P | A | I | R | I | T | T | N | E | R |
| O | T | R | A | S | H | P | L | A | S | T | I | C | S | T |
| E | H | E | A | L | T | H | Y | E | G | A | B | R | A | G |
| G | H | Y | B | R | I | D | N | I | W | S | O | L | A | R |



|           |          |         |             |        |            |
|-----------|----------|---------|-------------|--------|------------|
| Cardboard | Paper    | Compost | Recycle     | Litter | Trees      |
| Plastic   | Bottles  | Glass   | Clean Air   | Cans   | Reduce     |
| Aluminium | Landfill | Soil    | Clean Water | Metal  | Wind       |
| Decompose | Heathy   | Day     | Environment | Earth  | Earthworms |

**Re-use** store unwanted clothes and items at home until the charity shops re-open!

# Composting



One of the ways you can re-use green waste is to compost at home.

As part of our partnership with Merseyside & Halton, [getcomposting.com](http://getcomposting.com) provides Liverpool residents with offers on home compost bins. You can purchase a compost bin at [www.merseyside.getcomposting.com](http://www.merseyside.getcomposting.com)

Once you've got your bin, you'll need some advice on setting it up and how to get started. You can find more information at :

**Recycle Now** [www.recyclenow.com](http://www.recyclenow.com)

**Royal Horticultural Society**

Don't forget it is possible to compost without a bin in your garden too.

## What do I put in my home compost bin/store?

|                             |                        |                    |                        |                |                           |
|-----------------------------|------------------------|--------------------|------------------------|----------------|---------------------------|
| Tea bags                    | Grass cuttings         | Vegetable peelings | Old flowers and plants | Coffee grounds | Twigs and hedge clippings |
| Sawdust and wood chip-pings | Natural fibres/cottons | Crushed egg-shells | Straw                  | Salad leaves   | Fruit and veg scraps      |

**X** Never put these in your compost bin

Cooked vegetables

Meat and dairy products

Diseased plants

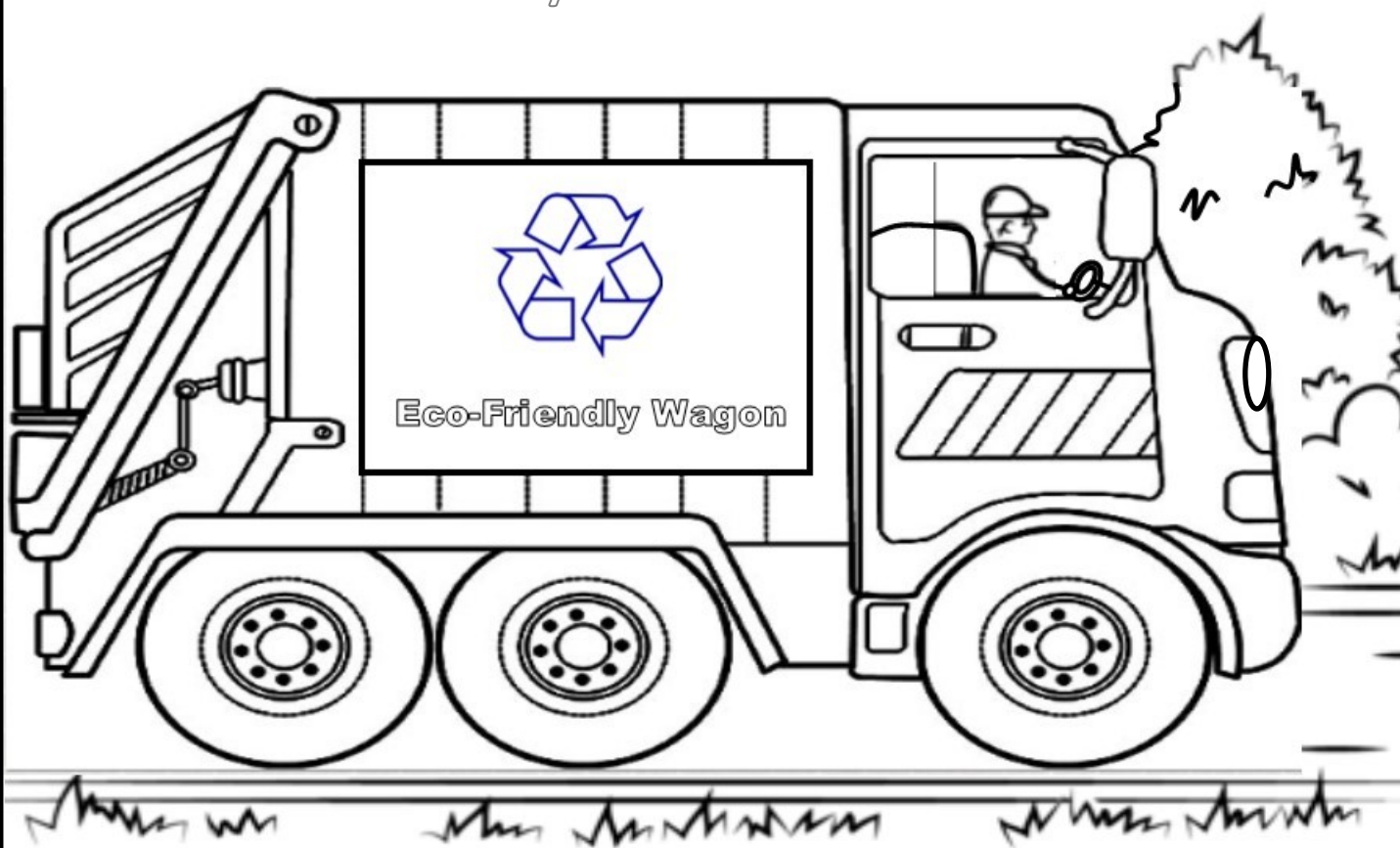
Dog or cat litter

Babies nappies



# Colour Sheet....

“THANK YOU” Streetscene Services  
for all your hard work



Lets say “Thank You” to all our LSSL Bin Crews for all their hard work  
please place your drawing in your window or cello-tape to your recycle bin.

# Activity: Recycling Quiz



1. If you live in Liverpool what colour is your recycle bin? A) **Green** B) **Purple** C) **Blue**
2. How many years does it take for a can of cola to decompose/ rot away? A) **60-80 years** B) **80-100** C) **100-120**
3. How many times can a plastic bottle be re-used ? A) **2 times** B) **5 times** C) **Forever**
4. In 2016 Barcelona FC had their football shirts made out of what? A) **Soup Cans** B) **Newspapers** C) **Plastic Bottles**
5. If you recycle 1,000 kilo's of paper, how many trees do you save? A) **17 trees** B) **24 trees** C) **30 trees**
6. Can you put cans of deodorant (aerosol) in the recycle bin? A) **Yes** B) **No**
7. Recycling one aluminium can saves enough energy to run a television for how long? A) **1 hour** B) **2 hr** C) **3 hours**
8. Which of these items can't you put in a recycle bin? A) **plastic milk bottle** B) **Plastic Bag** C) **Magazine**
9. How many plastic bottles does an average house in England use in a Year? A) **250** B) **373** C) **425**
10. Can you place a yoghurt pot in the recycling bin A) **No** B) **Yes**
11. Which European country recycles the most waste? A) **England** B) **France** C) **Sweden**
12. The 2020 Olympics, all the medals won will be made from recycled what? A) **Plastic** B) **Jewellery** C) **Mobile Phones**

## RECYCLING QUIZ ANSWERS

1.C) BLUE 2. B) 80-100 YEARS 3. C) FOREVER 4 C) PLASTIC BOTTLES 5 A) 17 TREES 6) B NO  
7 C) 3 HOURS 8 B) PLASTIC BAG 9 C) 425 10 A) NO 11 C) SWEDEN 12 C) MOBILE PHONES

*Make a Pledge*



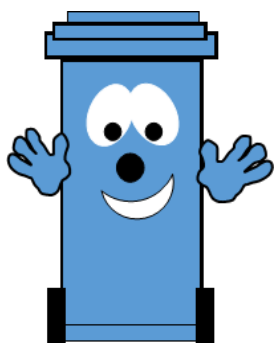
*To help Recycle for Liverpool ,I/we  
pledge to...*

.....

.....

.....

.....

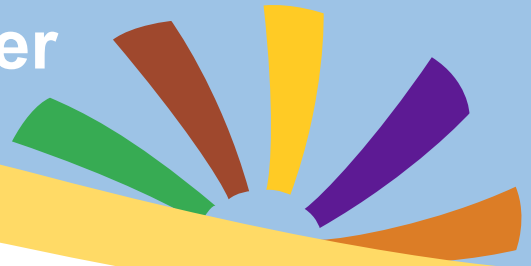


Liverpool  
City Council





# Design a Recycling Poster

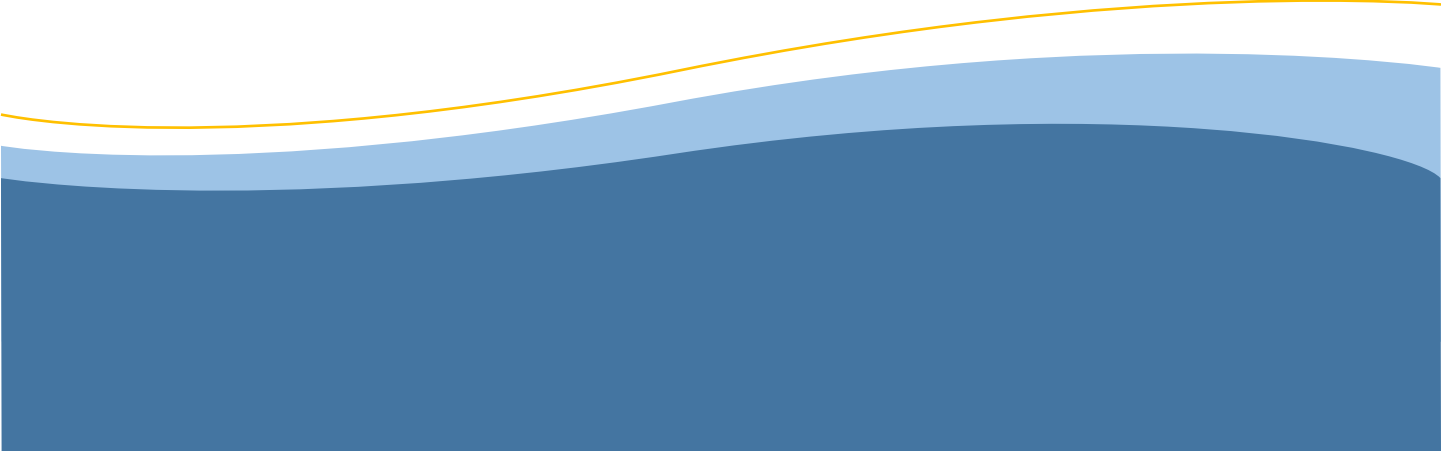


**Email a copy (jpeg) of your poster back to the Recycling Team and we'll display them at our future community events & social media  
[recyclingteam@liverpool.gov.uk](mailto:recyclingteam@liverpool.gov.uk)**

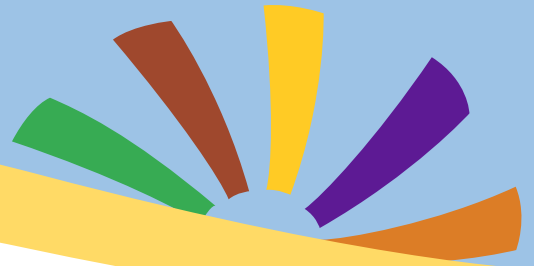
# Activity: Card Sorting Game



Place the cards next to the correct bin



# Card Sorting Game 2/4



## Recycling Cards



Plastic Bottles



Glass Bottles & Jars



Food & Drink Cans



Paper & Magazines



Cardboard

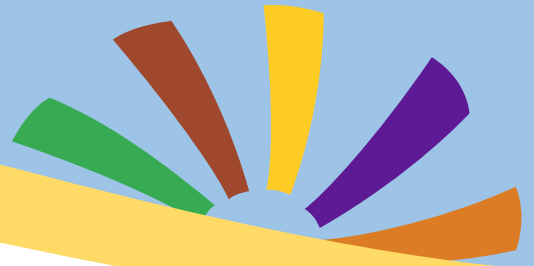


Envelopes

Instructions: print off the cards, shuffle them up with other cards and place each card on the correct bin.

The cards can also be used to play 'snap' if you print off a second copy.

# Card Game cards 2/3



## Non-recycling items



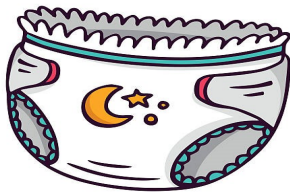
Cartons



Plastic Bags



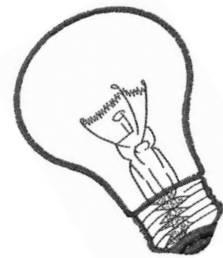
Food Trays / Pots



Nappies



Sweet Packets



Light Bulb

# Card Game cards 3/3



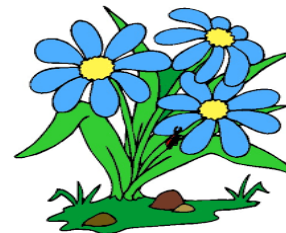
## Garden/green waste cards



Twigs



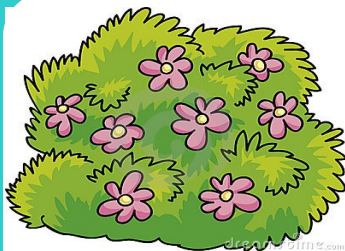
Grass Cuttings



Flowers



Leaves



Shrub Cuttings



Weeds



# Activity: Match the words to the pictures below:

Plastic Bottle

Food Can

Drinks Can

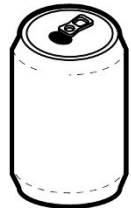
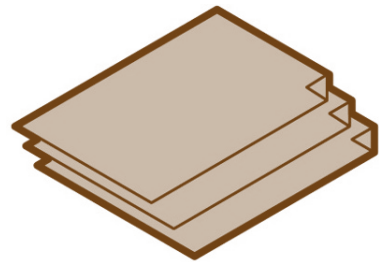
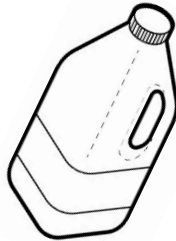
Newspaper

Magazines

Cardboard

Glass Jar

Glass Bottle



Did you know recycled plastic bottles can be used to make park benches!



# What do these words mean?

Recycling /  
Recyclables

Waste that can be processed into something else that can be useful.

General Waste

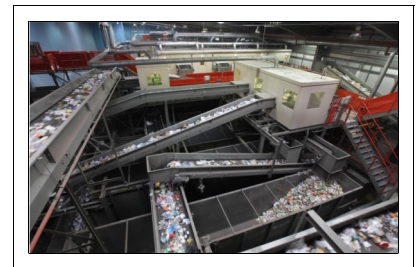
The waste that cannot be recycled, the items you put in your purple bin.

Landfill

A site where waste is taken to and left to decompose naturally which for some items can take thousands of years.

Recycling Plant

A place where your recycling is taken to be sorted.



Incineration

A process of burning at very high temperatures.

Energy from Waste

A process of burning waste in large quantities to create energy which is recycled into useable things such as the electricity to our homes.

Contamination

Items of waste which are not recyclable and which are put incorrectly into the blue bin .

Recycle Week

A national week every year in September to celebrate and raise awareness about recycling.

Donation banks

Large containers placed around the city where you can deposit unwanted clothes and small household items to charity.



## Further information & resources

**Liverpool City Council**

[www.liverpool.gov.uk/bins](http://www.liverpool.gov.uk/bins)

**Merseyside Recycling and Waste Authority**

[www.merseysidewda.gov.uk](http://www.merseysidewda.gov.uk)

[www.recycleright.org.uk](http://www.recycleright.org.uk)

**Veolia / Gillmoss Discovery Centre**

[www.veolia.co.uk](http://www.veolia.co.uk)

[www.recyclenow.org](http://www.recyclenow.org).

[www.lfhw.org](http://www.lfhw.org) Love Food Hate Waste

### Contact Us:

**Email:** [recyclingteam@liverpool.gov.uk](mailto:recyclingteam@liverpool.gov.uk)

**Twitter:** @lpoolcouncil @LRecycles

Recycling and Waste Minimisation Team

Liverpool City Council



*Make Liverpool Cleaner & Greener Together !*



Liverpool  
City Council

